
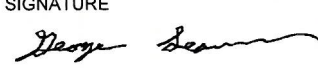



## AIRBORNE UNIT ASSUMES RESPONSIBILITY FOR PERSONNEL INJURY AND EQUIPMENT DAMAGE ON DZ

<b>DROP ZONE SURVEY</b>	1A. DZ NAME PK West DZ	1B. ZAR INDEX NO. SNNCD00007-F	2A. COUNTRY USA	2B. STATE North Carolina					
	3. MAP SERIES/SHEET NUMBER/ EDITION/ DATE OF MAP NI / 1703 / Ed 6 / 1992								
<b>4. SURVEY APPROVAL/DISAPPROVAL DATA</b>									
4A1. DATE SURVEYED 11 Feb 2016	4A2. TYPED NAME AND GRADE OF SURVEYOR Caleb Gilbreath, E6, USAF	4A3. PHONE NUMBER (DSN) 383-2460	4A4. UNIT SOCOM / 724 STG, Pope AAF, NC						
4B. DROP ZONE APPROVAL/DISAPPROVAL A = APPROVED D = DISAPPROVED	FOR	CDS/CRL/CRS	PER	HE	MFF	SATB	CRRC	HSSLADS	HVCDS
	DAY	D	A	D	A	D	D	D	D
	NIGHT	D	A	D	A	D	D	D	D
4C. DATE APPROVED FOR GROUND OPERATIONS  22 Feb 2016	NAME, GRADE AND SERVICE OF APPROVAL AUTHORITY Douglas A. Fenske, Civilian, USAF		PHONE NUMBER (DSN) 383-6166		SIGNATURE 				
	UNIT AND LOCATION SOCOM / 724 STG, Fort Bragg, NC								
4D. DATE SAFETY OF FLIGHT REVIEW APPROVED  22 Feb 2016	NAME AND GRADE OF REVIEWING OFFICER George Seaman, Civilian, DOD		PHONE NUMBER (DSN) 383-4539		SIGNATURE 				
	UNIT AND LOCATION SOCOM / AVTEG, Ft Bragg, NC								
4E. DATE OF MAJCOM APPROVAL  23 Feb 2016	NAME AND GRADE OF APPROVING AUTHORITY Brian R. Helton, Lt Col, USAF		PHONE NUMBER (DSN) 383-4690		SIGNATURE 				
	UNIT AND LOCATION SOCOM / AVTEG, Ft Bragg								
<b>5. COORDINATING ACTIVITIES</b>									
A. DZ CONTROLLING AGENCY OR UNIT John D'Annunzio, Owner			B. MEMORANDUM OF UNDERSTANDING/LAND USE YES <input type="checkbox"/> NO <input checked="" type="checkbox"/> ATTACHED <input type="checkbox"/>				C. PHONE NUMBER (DSN) 910-518-6533		
D. RANGE CONTROL PK Airpark Airfield Operations, UNICOM: 123.0 / Jump Ops: 123.5						E. PHONE NUMBER (DSN) 910-875-3261			
<b>6. DZ DIMENSIONS (YDS/MTRS) (FOR CIRCULAR DZ, ENTER RADIUS ONLY)</b>									
A. LENGTH 1,075 YDS / 982.98 m			B. WIDTH 700 YDS / 640.08 m			C. RADIUS (N/A)			
POINT OF IMPACT DISTANCES FROM DZ LEADING EDGE		D. CDS PI (N/A)		E. PE PI 350 YDS / 320.04 m		F. HE PI (N/A)			
<b>7. DZ AXIS DATA (OPTIONAL FOR CIRCULAR DZ)</b>									
A. MAGNETIC 279.5°		B. GRID (MGRS) 271.8°		C. TRUE 270.8°		D. SOURCE/DATE OF VARIATION DATA WWM 2015 2015			
8. GROUND POINT ELEVATION		A. CDS PI (N/A)		B. HE PI (N/A)		C. PE PI 380' MSL		D. HIGHEST 380' MSL	
<b>9. DZ COORDINATES</b>									
A. SPHEROID WGS84		B. DATUM WGS84		C. GRID ZONE 17S		D. EASTING 06		E. NORTHING 38	
F. GPS DERIVED COORDINATES YES <input checked="" type="checkbox"/> NO <input type="checkbox"/>			G. POINT OF ORIGIN NW Corner of trailer (17S PU 64825 76845) PEPI is located 310m @ 008° Mag.						
H. POINT	MGRS COORDINATES			WGS84 LATITUDE (D-M.MM)			WGS84 LONGITUDE (D-M.MM)		
DZ CENTERPOINT	17S PU 64651 77156			35° 01.420' N			079° 11.714' W		
CDS PI	(N/A)			(N/A)			(N/A)		
PE PI	17S PU 64822 77157			35° 01.419' N			079° 11.601' W		
HE PI	(N/A)			(N/A)			(N/A)		
<b>I. DZ CORNERS MGRS COORDINATES</b>									
LEFT LEADING EDGE 17S PU 65143 76838				RIGHT LEADING EDGE 17S PU 65141 77478					
LEFT TRAILING EDGE 17S PU 64160 76834				RIGHT TRAILING EDGE 17S PU 64158 77474					

AF IMT 3823, 20021001, V2 / PDF COPY OF ORIGINAL V6.3

DZ NAME

PK West DZ

10. DZ DIAGRAM

See Attached Diagram

11. REMARKS

1. Supported units commander accepts responsibility for damage to equipment, property, and/or injury to personnel on and around the DZ.
2. Coordinates and elevation data derived from Trimble GEO XH 6000 without RTK .  
a. Horizontal margin of error +/- 1.5 meters, Vertical margin of error 1.5 X horizontal error.\
3. MAGVAR (8.7°W) derived from WMM 2015 as of 11 Feb 2016.
4. Administration / Coordination / Planning / Scheduling Instructions:  
a. Active Civilian Jump Operations, aircraft will monitor 123.5 for Jump ops and CTAF 123.0 for Traffic  
b. Aircraft will contact FAY APP on 127.8 prior to all drops.
5. Surveyor Observed Obstacles/Hazards on and within 1,000 meters of the DZ Boundary (All distances from DZ Center point unless otherwise specified) User is responsible for confirming ALL obstacle/hazard locations prior to conducting airdrop operations:  
a. Inside DZ:  
1) 15' Home 2209'(673M) @ 302.43°M from PE PI.  
2) 15' Home 1878'(572M) @ 305.88°M from PE PI.  
3) 12' Pond 825'(252M) @ 244.73°M from PE PI.  
4) 12' Trailer 312m @ 188°M from PE PI.  
5) 20' Tree 442m @ 228°M from PE PI.  
6) 40'-60' Trees 179m @ 245 °M from PE PI.  
7) 40'-60' Trees 416m @ 249 °M from PE PI.  
8) 40' Tree 597m @ 244°M from PE PI.  
9) 5' Fence line 601m @ 247°M from PE PI.  
10) 80' Trees 638m @ 247°M from PE PI.  
11) 35' Power lines 702m @ 252°M from PE PI.  
12) 4' Fence line 458m @ 300°M from PE PI.  
13) 35' Power lines 569m @ 303°M from PE PI. (CAUTION: contact Lumbee River Power Company 1-800-683-5571 if power shut-off is required)  
14) 40'-80' Trees surround DZ.  
15) 10'-25' Thorny brush/ Trees 306m @ 280°M from PE PI.  
16) 4'-6' Brush/ Trees throughout  
b. Outside DZ:  
1) 35' Power lines 750m @ 282°M from PE PI.  
2) 15' Brush 740m @ 290°M from PE PI.  
3) High traffic rd 756m @ 280°M from PE PI.  
4) Pond unknown depth 668m @ 207°M from PE PI.  
5) Pond unknown depth 1518m @ 265°M from PE PI.  
6) Pond unknown depth 1308m @ 314°M from PE PI.
6. Safety of Flight Review:  
a. SOF Review Reported Obstacles/Hazards (including Rapidly Rising / High Terrain) within 5 NM Radius of the DZ Centerpoint:  
1) North (315°-045°): None  
2) East (045°-135°): Multiple towers / 295' - 712' MSL / 0.5 - 9.6 NM  
3) South (135°-225°): Multiple towers / 253' - 896' MSL / 0.7 - 10.0 NM  
Several power lines located 3.5 - 10 NM south of DZ max height 100' AGL.  
4) West (225°-315): Multiple towers / 344' - 915' MSL / 2.5 - 9.5 NM

12. PHOTOGRAPH AVAILABLE

YES NO 

LOW LEVEL ROUTES

 NONE AVAILABLE ROUTE NAME/DESIGNATOR

PK West DZ

b. DZ is located within or in close proximity to the following airspace:

- 1) Fort Bragg R-5311 boundary located 1.4 NM north of DZ.
- 2) DZ within Raeford Class E airspace (700' AGL - FL180 MSL).
- 3) DZ within Fort Bragg South Area A MOA (surface to 3,000' MSL)
- 4) Fort Bragg South Area B MOA (1,500' AGL - 6,000' MSL) located 2.5 NM south of DZ.

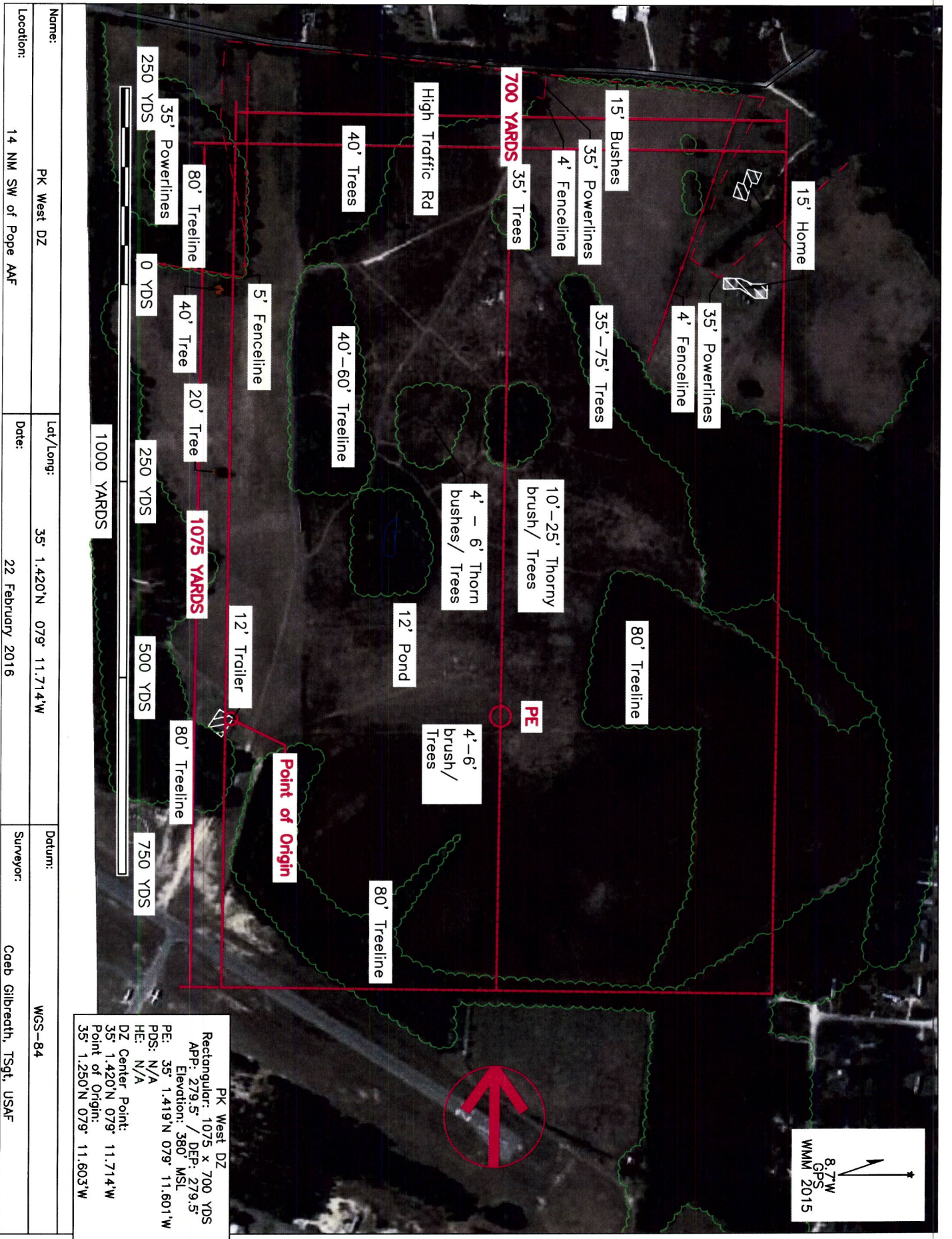
c. Additional Information:

- 1) Airways V296, V54 and J207 pass within 10 NM of DZ.

7: Notes

- a. Random Run-ins approved for MFF operations unless otherwise dictated by ATC.





8.7W  
GPS  
WMM 2015

PK West DZ  
 Rectangular: 1075 x 700 YDS  
 App: 279.5' / DEP: 279.5'  
 Elevation: 380' MSL  
 PE: 35° 1.419'N 079° 11.601'W  
 PDS: N/A  
 HE: N/A  
 DZ Center Point:  
 35° 1.420'N 079° 11.714'W  
 Point of Origin:  
 35° 1.250'N 079° 11.603'W

Name:	PK West DZ	Lat/Long:	35° 1.420'N 079° 11.714'W	Datum:	WGS-84
Location:	14 NM SW of Pope AAF	Date:	22 February 2016	Surveyor:	Coab Gilbreath, TSgt, USAF